

Introduction

To enable ProCal-Track to share the Certificates database with ProCal it is necessary to set the Certificates database path.

When initially installed on a single computer, the path for ProCal-Track is set to point to ProCal as default, i.e.

C:\ProCal\Certificates

This path setting means that all information is stored in the same database for both ProCal and ProCal-Track - when a change is made by either program this data is available to each program (e.g. booking in an instrument using ProCal-Track means ProCal can perform calibration based on this data).

Using ProCal-Track on a network

Using ProCal and ProCal-Track on a Windows network means that one of the computers will need to be used as the default location to store data (known as the server). This means that all the data is stored on this computer and shared by each other computer (known as a workstation) on the network.

To allow each workstation to use the server for data storage, the path to the server needs to be set.

Sharing the 'C' drive on the Server

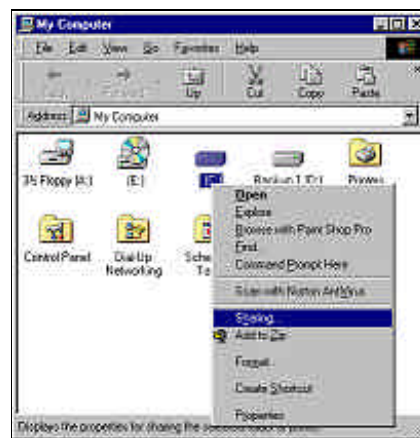
To set the path across the network, the server computer must have its 'C' drive shared for access across the network.

This can be set by using Windows :

1. On your desktop, double click on **My Computer**.



2. Right click on your 'C' Drive and choose **SHARING** (note : this will only be available is your computer is set up on a network)



3) Select **Shared As**, set **Shared Name** as 'c' and set **Access Type** as 'Full'
 Do not enter a password. Click OK to set.



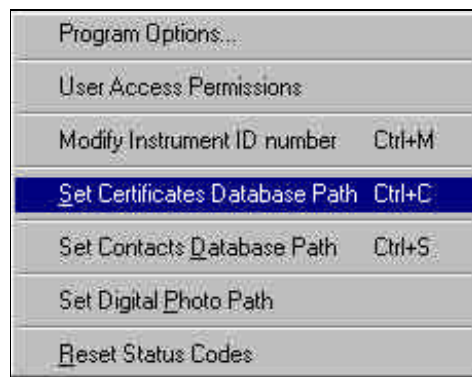
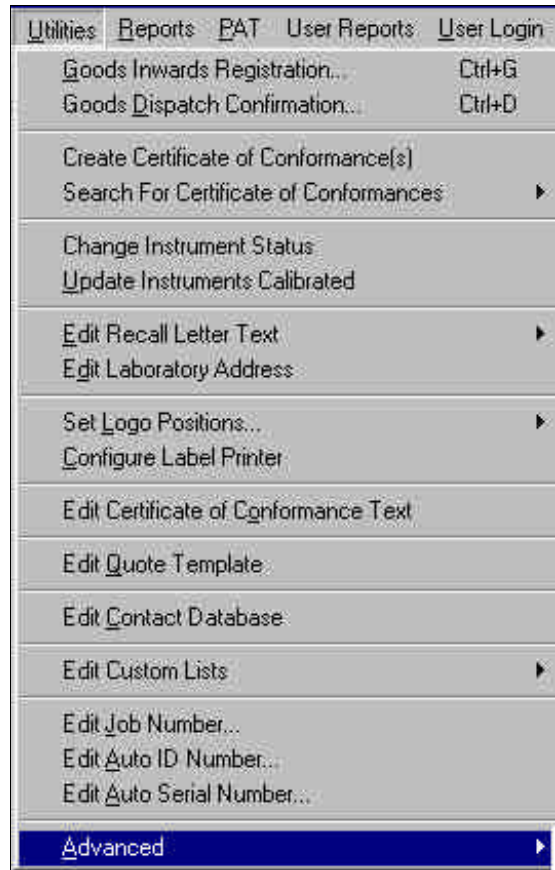
Now the server 'C' drive is shared, this can be accessed across the network by the workstations.

Setting up a Workstation

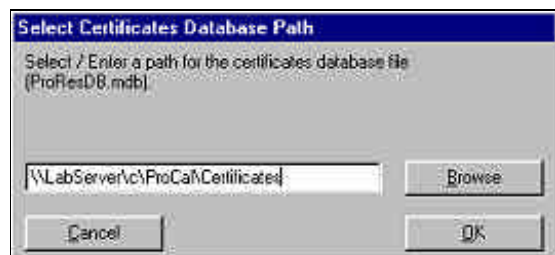
All that is now required is to set up each workstation to 'point' at the server. To do this the name of the computer must be known - contact your IT administrator if you do not know this computer name.

Start ProCal-Track on the workstation you want to set up, and go to :

- Utilities ->
- Advanced ->
- Set Certificates Database Path



The path now needs to be entered.



This path will include the name of the computer on the network you will be using as the server. In this example the name of the computer using used as the server is LabServer (Note : this name does not need to indicate it is a server, it is simply the name of the computer you are going to use for the main data storage).

The path would be :

\\LabServer\c\ProCal\Certificates

Note : The path must include the *ProCal* folder and the *Certificates* sub folder as this is where the actual database resides.

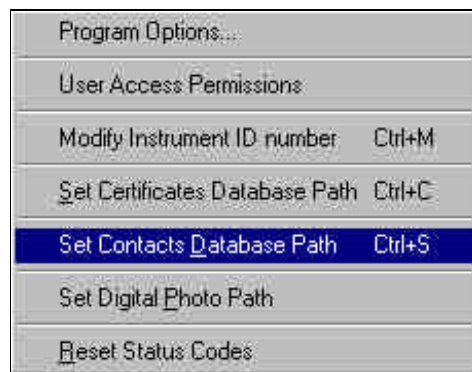
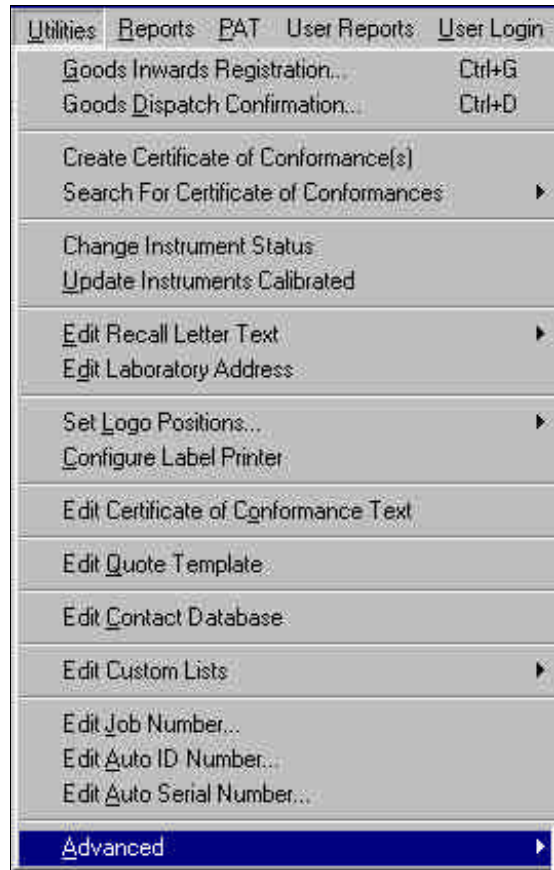
Once this path is entered, click OK.

Note : If the path entered is not found, the path will default back to the local computer.

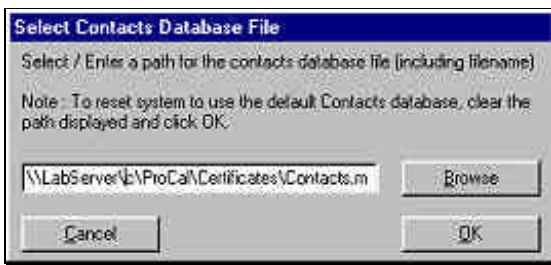
Use the **File -> View/Edit an Instrument** function to check data is now shared with the server.

If the contacts database is also required to be shared, this will need to be set up as follows :

**Utilities ->
Advanced ->
Set Contacts Database Path**



The path now needs to be entered.



This path will include the name of the computer on the network you will be using as the server. In this example the name of the computer used as the server is LabServer (Note : this name does not need to indicate it is a server, it is simply the name of the computer you are going to use for the main data storage).

The path would be :

**\\LabServer\c\ProCal\Certificates\
Contacts.mdb**

Note : The path must include the *ProCal* folder and the *Certificates* sub folder AND the database name (including extension)

Once this path is entered, click OK.

Note : If the path entered is not found, the path will default back to the local computer.

Use the **Utilities - > Edit Contacts** Database function to check data is now shared with the server.